



LUXURY
LIVING
SPACES @
TRIPUNITHURA



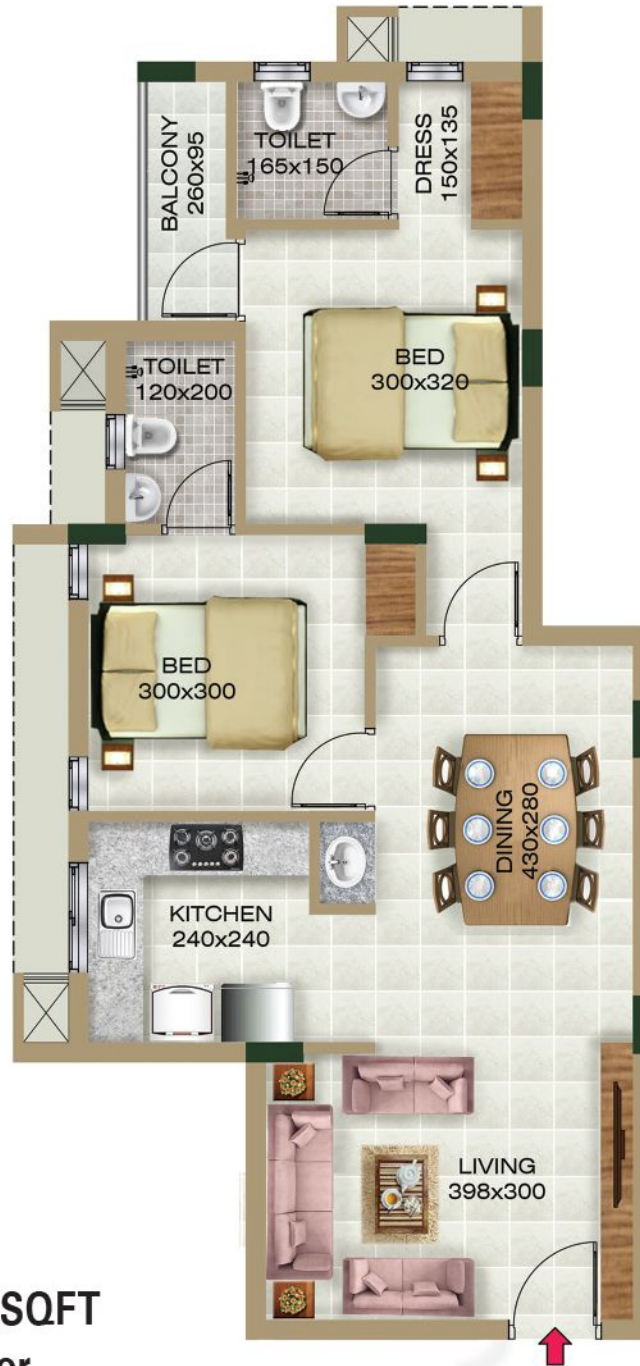




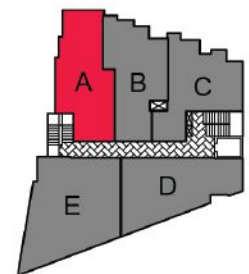
Asian Developers, have been consistently making great strides in fulfilling the dreams of large number of valued home owners. Our team is equipped with many years of experience in the field of contemporary home construction and property development. Have proven efficiency in completing lucrative projects, we are unconditionally committed to maintaining our standard of excellence. With over decades of experience in residential construction, the distinguished presence of Asian Developers pervades every field of home building. Asian Developers have wielded expertise in the completion of innumerable projects ranging from Apartments to luxurious buildings and commercial complexes.



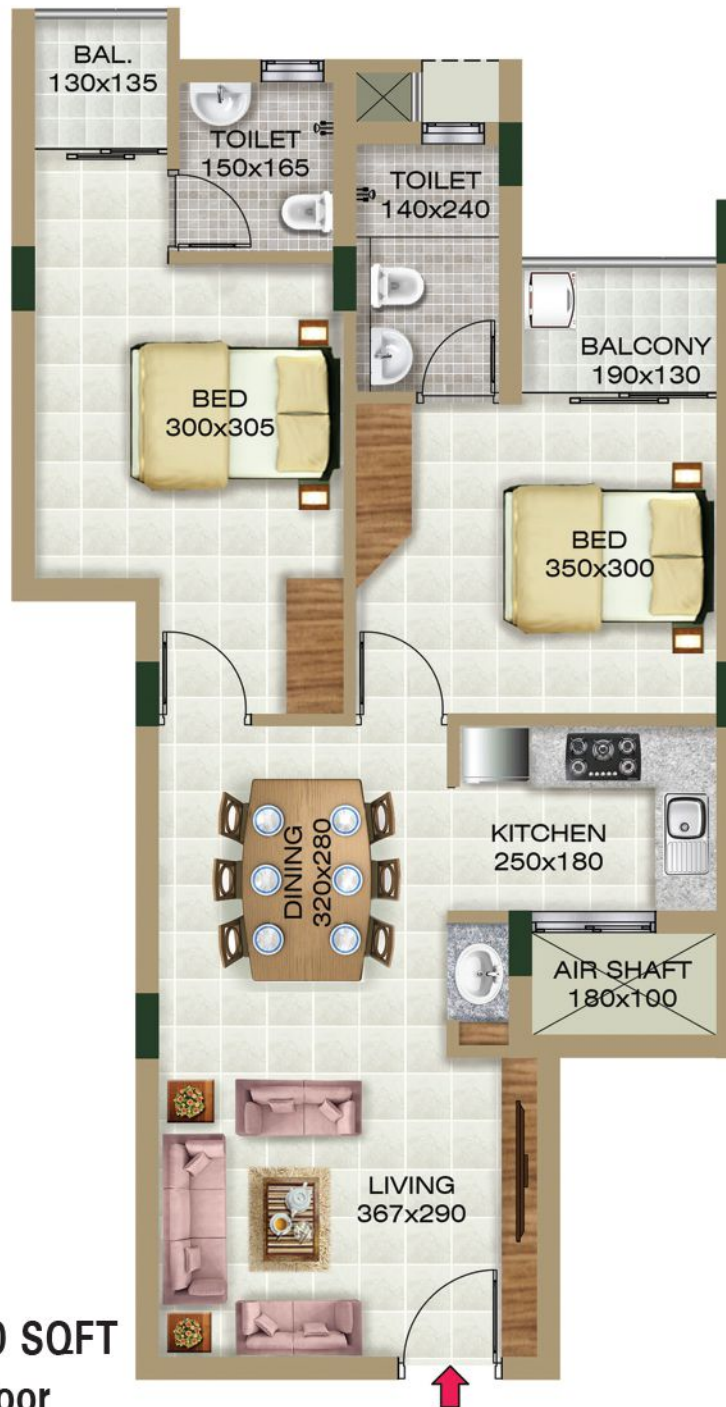
Asian NJP- Typical Floor plan



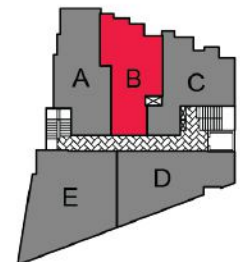
2 Bed Unit - 974 SQFT
3rd & 4th Floor



TYPE- A3 & A4



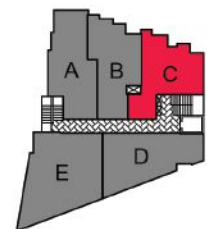
2 Bed Unit - 920 SQFT
3rd & 4th Floor



TYPE- B3 & B4



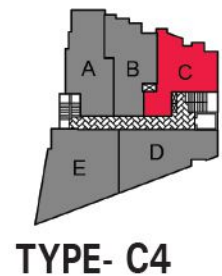
2 BED UNIT - 902 SQFT
3rd Floor



TYPE- C3

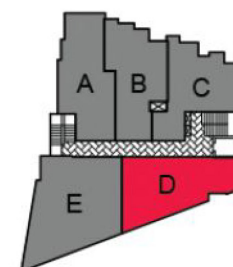


2 BED UNIT - 898 SQFT
4th Floor





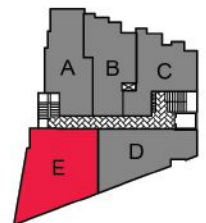
2 BED UNIT - 1045 SQFT
3rd & 4th Floor



TYPE- D3 & D4



3 BED UNIT - 1380 SQFT
3rd & 4th Floor



TYPE- E3 & E4



THIRUPUNITHURA

SPECIFICATIONS

LIFT LOBBY

FLOOR: Vitrified Tile
WALLS: Acrylic Emulsion Paint on Putty Finish
DOORS: Glassed Door
HVAC: Ceiling Fan
ELECTRICAL: Ample Lighting

FIRE & SAFETY

Modern Fire Fighting Systems as per Govt. Safety Norms.

FOYER, SITTING & DINING

FLOOR: Vitrified Tiles (60 X 60 cm)
WALLS: Acrylic Emulsion Paint on Putty Finish
CEILING: Acrylic Emulsion Paint on Putty Finish
WINDOWS: Powder Coated Aluminium Sliding Windows
DOOR: Laminated Flush Doors
HVAC: Provision for Ceiling Fan in Sitting & Dining Rooms
ELECTRICAL: Modular Switches. Concealed Conduit Wiring for Cable TV, Telephone & Intercom in sitting Room.

BEDROOMS

FLOOR: Vitrified Tiles (60 X 60 cm)
WALLS: Acrylic Emulsion Paint on Putty Finish
CEILING: Acrylic Emulsion Paint on Putty Finish
WINDOWS: Powder Coated Aluminium Sliding Windows
DOORS: Laminated Flush Doors
HVAC: Provision for ceiling Fan
ELECTRICAL: Modular Switches.

KITCHEN

FLOOR: Vitrified Tile
WALLS: Acrylic Emulsion Paint on Putty Finish
CEILING: Acrylic Emulsion Paint on Putty Finish
WINDOWS: Powder Coated Aluminium Windows
DOORS: Partially Glazed Laminated Flush Doors
HVAC: Provision for Exhaust Fan
ELECTRICAL: Adequate Light Points and sockets for Fridge & Mixie.

BALCONY

FLOOR: Ceramic Tiles
WALLS: Exterior Acrylic Emulsion Paint on Putty Finish
CEILING: Acrylic Emulsion Paint on Putty Finish
DOOR: Powder Coated Aluminium Sliding Doors

TOILETS

FLOOR: Qualified Anti-skid Ceramic Tiles.
WALLS: Quality Glazed Ceramic Tiles
DOORS: Laminated Flush Doors
HVAC: Provision for Exhaust Fan
FIXTURES & FITTINGS: Wash Basin, EWC, Taps and CP Fittings.
ELECTRICAL: Adequate Light Points

MAKE/ BRAND

Cement : Ambuja/ACC/Birla/ Equivalent
Steel : Sail/Jindal/Tulsian/Equivalent

PLUMBING

Washbasin & Wall mounting water closet : Cera Equivalent
CP Fitting : Hindware/Cera
Water supply line : Supreme/Finolex/Astral
Soil & waste water lines : Supreme/Finolex/Astral
SS grating cover : Chillie/Equivalent
Pumps CRI/ Kirlosker : CRI/Kirlosker

ELECTRICAL

Cables : Finolex Polycab/Havels/Vguard
Switches/MCB/DB : Legrand/Havels/Equivalent
Generator : Kirlosker/Equivalent
Transformer : Unipower/Equivalent
RMU : Crompton/Abb/Equivalent

TILES

Vitrified Flooring : Kajaria/Johnson/Somany/Cera Equivalent
Ceramic Toilet & Balcony Flooring : Kajaria/Johnson/Somany/Cera Equivalent
Toilet Wall tiles (Glazed) : Kajaria/Johnson/Somany/Cera Equivalent

PAINT

Interior & Exterior Emulsion & Enamel : Asian/Jotun/Berger/Equivalent
Internal Putty : Birla White/Berger
LIFT : Otis/Kone/Johnson

DOORS

Doorshutter & Frames : Jacson/Equivalent
Main Door Lock : Godrej or Equivalent with Safety Chain
Internal Door Lock : Godrej or Equivalent with Magnetic Catcher
Toilet Door Baby latch : Godrej Equivalent



Community Amenities

Terrace party space with wash area & toilet

Multi purpose hall

Covered parking in basement floor

Intercom facility for all flats and lifts

Modern fire fighting equipments

Rainwater harvesting

Owners Directory & Letter box

One no. of 8 passengers lift

24 hr Generator backup

PROXIMITY



Proposed Metro
Station- 3km



Bavan's School
0.5 km



Hill Palace
0.3 km



Lakeshore Hospital
8 km

ASIAN NJP-LOCATION MAP





OUR PRESTIGIOUS PROJECTS AROUND KOCHI



Asian Amaranta- Edappally



Asian Allegra - Vyttila



ASIAN ALORA-ERNAKULAM NORTH



PANAMPILLY NAGAR

2,3,4 BHK
APARTMENTS

Nearing
Completion

Own a luxury apartment at
PANAMPILLY NAGAR

ASIAN
avenue



K-RERA/PRJ/ERN/018/2021



Reg. Office:

ASIAN DEVELOPERS

201 A, JAWAHAR NAGAR, KADAVANTHRA, Kochi -20,
PH: 0484 4045033, Email: sales@asianrealtors.in



www.asianrealtors.in

**[+91 95260 43331
+91 95260 43332]**



Disclaimer: The contents provided in this brochure are in good faith and for general informational purpose only. Asian Developers make no warranties either expressed or implied. All the informations including samples, URL and the internet references are subject to change without notice. Asian Developers accepts no liability whatsoever for any consequential loss arising from the use of contents.